



CONDENSING GAS FIRED  
FLOOR OR WALL MOUNTED  
BOILER

**PARTS, KITS &  
OPTIONAL ACCESSORIES**

**Model  
DMG-240**

ORDERING INSTRUCTIONS  
ORDER PARTS THROUGH YOUR NEAREST SUPPLIER.  
WHEN ORDERING PARTS, OBTAIN MODEL NUMBER AND SERIAL NUMBER  
FROM DATA PLATE ON YOUR BOILER.  
INCLUDE FOLLOWING INFORMATION WHEN ORDERING.

PART NUMBER \_\_\_\_\_

PART DESCRIPTION \_\_\_\_\_

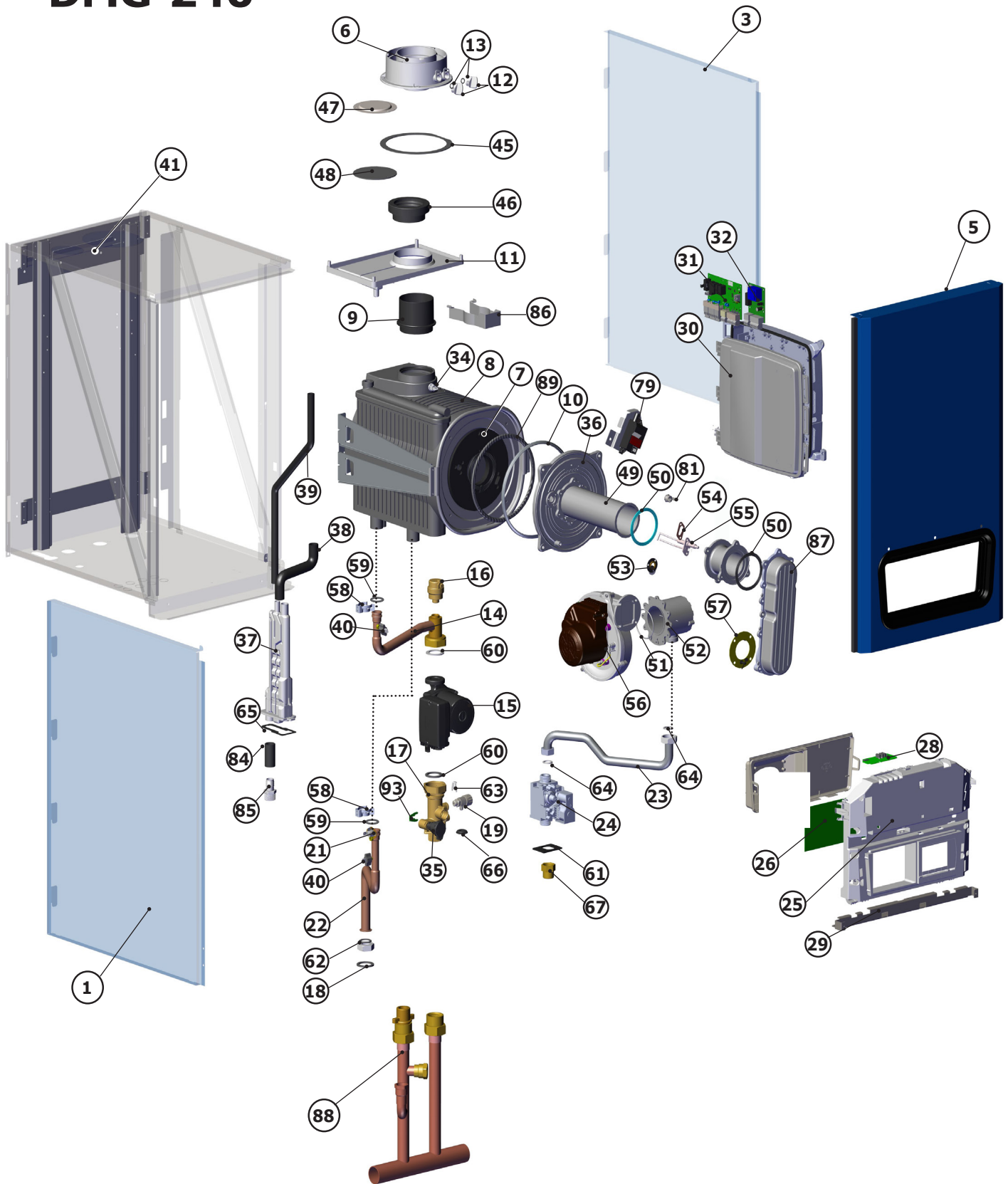
BOILER MODEL NUMBER \_\_\_\_\_

BOILER SERIAL NUMBER \_\_\_\_\_



Manufactured by:  
ECR International Inc.  
2201 Dwyer Avenue, Utica, NY 13501  
Tel. 800 253 7900  
[www.ecrinternational.com](http://www.ecrinternational.com)  
PN 240011657 REV. D [04/30/2019]

# Model DMG-240



## DESCRIPTION OF PARTS

POS.	PART NUMBER	DESCRIPTION
1	550003273	PNL LT,DMG-240
3	550003274	PNL,RT,DMG-240
5	550003242	KIT,JKT,FRNT DMG240
6	BD000005670522	ASSEMBLY FLUE ADAPTER, 240(550003264)
7	BD721984602V	HEAT EX INSULATION PANEL
8	550003256	BD,HTEX,240
9	BD767370101V	BD,FUMES,ADPTR,HTEX,240/HO
10	BD722003801V	BD,SEAL,HTEX,DOOR,FRNT
11	BD767553501V	TRAY- VENT CONDENSATION (550003263)
12	550003264	TEST PORT PLUG
13	BD710107801V	O-RING TEST PORT PLUG
14	550003255	PIPE - PUMP TO HX
15	550003248	PUMP
16	BD000005652731	AIR VENT
17	550003252	HYDRO BLOCK 240
18	550003260	SUPPLY CONNECTION
19	BD710188101V	DRAIN TAP
*20	VR00102	PRESSURE RELIEF SAFETY VALVE
21	BD710626001V	HIGH LIMIT TEMP SWITCH
22	550003254	FLOW PIPE 240
23	550003261	GAS SUPPLY PIPE
24	550003244	GAS VALVE
25	BD763892408V	BD,CTRL BOX,UI,240/380
26	550003268	BD,PCB PCU04 NA ASSY,240/380
*27	BD764979601V	BD,PARAMETER STICK,240/380
28	550003269	BD,CONTROLLER SAFETY SU-01,240/380
29	BD721871101V	BD,CONTROL BOX HINGE,240/380
30	BD764986901V	BD,SCU ELECTRIC BOX,240/380
31	550003266	BD,PCB SCU-S02,240/380
32	550003267	BD,HONEYWELL OTZTC PCB,240/380
*33	BD000005643331	GAS SHUTOFF VALVE (3/4")
34	BD711180100	NTC FLUE SENSOR
35	550003253	WATER PRESSURE SENSOR
36	550003257	HEAT EXCHANGER DOOR
37	550003247	CONDENSATION TRAP
38	BD721622201V	HOSE- HEAT EX TO TRAP
39	BD721632601V	HOSE- VENT TRAY TO TRAP
40	BD722601800	WATER TEMP SENSOR
41	109009874	WALL MOUNTING BRACKET
*42	1260006SP	TEMPERATURE / PRESSURE GAGE
45	BD000005410712	GASKET- FLUE ADAPTER TO CABINET
46	BD767373901V	GASKET- HEAT EXCHANGER ADAPTER TO FLUE TRAY
47	BD710300601V	COVER PLATE- TWIN PIPE INTAKE

48	BD710784801V	GASKET-COVER PLATE, TWIN PIPE INTAKE
49	550003246	BURNER 65 KW
50	BD711408002V	BURNER GASKET
51	BD000003402101	O-RING- VENTURI 70mm X 3mm
52	550003265	POLIDORO VENTURI
53	550003157	SIGHT GLASS KIT
54	550003249	IGNITER (WITH GASKET)
55	BD710185302V	IGNITER GASKET
56	550003245	FAN (WITH GASKETS)
57	BD710115602V	GASKET FAN/AIR GAS DUCT
58	BD721623501V	CLIP- PIPES TO HEAT EXCHANGER
59	BD000005411331	O-RING 20MM X2.6mm
60	BD000005402141	PUMP GASKET, G1-1/2
61	BD710390601V	GASKET, GAS VALVE
62	BD000005405001	GASKET, G1 22x30,3x2
63	BD710110601V	CLIP, HYDROBLOCK PLUG
64	BD710113001	GASKET, G3/4 17X24X2
65	BD721696401V	GASKET- CONDENSATE TRAP
66	*BD710397801V	GASKET- G1 FOAM SEALING
67	BD722270601V	ADAPTER G3/4 X 3/4NPT
*68	BD722577701V	BD,HARN,PWR,SPLY,AUX CTRL,240/380
*69	240011690	HARN,SCU BUS WRG,X11-X2,240-380
*70	240011691	HARN,SCU BUS WRG,X2-K1,AUX,240/380
*71	240011685	HARN,PCBX4,POWER TO FAN,240/380
*72	BD721804702V	BD,WRG HARN X5-IGNTR,240/380
*73	240011686	HARN,PCBX6,TO GV,240/380
*74	BD721807501V	BD,WRG HARN x8,PUMP,240
*75	240011687	HARN,PCBX9,TO SAFETY/FAN,240
*76	BD721814101V	BD,WRG HARN x10,SENSORS,240
*77	240011694	HARN,PWR,SPLY,115V,240/380
*78	BD721804702V	IGNITION CABLE
79	550003250	IGNITION MODULE
81	BD711427701V	SAFETY THERMOSTAT 260 DEG C
84	240011904	HOSE,EPDM,BLK,1"OD,.75ID
85	240008838	CPLG,3/4"MLx.75"BRB
86	BD722393301V	BD,FXG BRKT CLCTR CNDS,240
87	550003258	BD,AIR GAS MNFLD
88	240011771	LABOR SAVOR MANIFOLD
89	BD000005212781	ROPE GASKET
*90	BD000005411030	GASKET (WATER TRAY TO HX)
91	BD710114502V	GASKET,BNR,SPCR/EXT
92	550003259	SPACER EXTENSION
93	BD710654101V	CLIP, PRESSURE SENSOR

\* NOT SHOWN

## KITS - HEAT EXCHANGER & COMPONENTS

<b>KIT 550003256 - HEAT EXCHANGER REPLACEMENT KIT INCLUDES:</b>			
<b>POS</b>	<b>PN</b>	<b>DESCRIPTION</b>	<b>QTY</b>
8	BD711163601V	HEAT EXCHANGER, 240	1
10	BD722003801V	SEAL, HTEX, DOOR, FRNT	1
64	BD710113001V	GASKET G3/4 17X24X2	1
45	BD000005410712	SEAL, FLUE ADAPTER	1
60	BD000005402141	PUMP GASKET GI 1/2, 44X30X2MM	1
28	BD711180100	NTC FLUE SENSOR	1
59	BD000005411331	O RING 20MM X 2.6MM	2
62	BD000005405001	GASKET G1 22X30.3X2	1
46	BD767373901V	SEAL, CONDENSATE TRAY	1
89	BD000005212781	ROPE GASKET	1
NS	240011705	INSTRUCTIONS	1

<b>KIT 550003246 - BURNER REPLACEMENT KIT INCLUDES:</b>			
<b>POS</b>	<b>PN</b>	<b>DESCRIPTION</b>	<b>QTY</b>
64	BD710113001V	GASKET G3/4 17X24X2	2
49	BD710401901V	BURNER 65 KW BURNER	1
50	BD711408002V	BURNER GASKET	1
91	BD710114502V	GASKET, BURNER, SPCR/EXTN	1
NS	240011700	KIT INSTRUCTIONS	1

<b>KIT 550003257 - HEAT EXCHANGER DOOR REPLACEMENT KIT INCLUDES:</b>			
<b>POS</b>	<b>PN</b>	<b>DESCRIPTION</b>	<b>QTY</b>
36	BD721962602V	DOOR, FRNT, HTEX	1
10	BD722003801V	SEAL, HTEX, DOOR, FRNT	1
81	BD711427701V	TSTAT, SFTY, 260°C	1
7	BD721984602V	STONE, INSUL	1
54	BD710185302V	GASKET, IGN, PEN	1
50	BD711408002V	BURNER, GASKET	1
89	BD000005212781	ROPE GASKET	1
64	BD710113001V	GASKET, G3/4 17X24X2	1
91	BD710114502V	GASKET, BRN, SPCR/EXTN	1
NS	BD710112202V	GASKET, SIGHT, GLASS	1
NS	240011706	INSTRUCTIONS - 240011706	1

NS = NOT SHOWN

## KITS - HEAT EXCHANGER & COMPONENTS

### KIT 550003605 - COMBUSTION CHAMBER CLEANING KIT INCLUDES:

POS	PN	DESCRIPTION	QTY
10	BD722003801V	SEAL, HEAT EXCH DOOR, FRONT	1
89	BD000005212781	SEAL,FBRGLS,ROPE	1
64	BD710113001V	GASKET G3/4 17X24X2	1
NS	240011636	GLOVE, LATEX, BLK, LRG, S-19810	4
NS	240011637	SHLD, HTEX, CLNG	1
NS	240011639	BAG, POLY, 12"X26", 2MIL, S5779	4
NS	240011640	BRUSH, 2"X3"M W/HANDLE, 1" STIFF BRISTLES	1
NS	240012413	INSTRUCTIONS	1

### KIT 550003249 - IGNITION ELECTRODE REPLACEMENT KIT INCLUDES:

POS	PN	DESCRIPTION	QTY
55	BD711010701V	IGNITION ELECTRODE	1
54	BD710185302V	IGNITION ELECTRODE GASKET	1
NS	240012293	WRENCH,HEX,3MM	1
NS	240011681	KIT INSTRUCTION	1

### KIT 550003250 - SPARK GENERATOR REPLACEMENT KIT INCLUDES:

POS	PN	DESCRIPTION	QTY
79	BD764905801V	IGNITER, 115V	1
NS	240011682	KIT INSTRUCTIONS	1

NS = NOT SHOWN

## KITS - OTHER MAJOR COMPONENTS

<b>KIT 550003245 - BLOWER REPLACEMENT KIT INCLUDES:</b>			
<b>POS</b>	<b>PN</b>	<b>DESCRIPTION</b>	<b>QTY</b>
56	BD722358701V	FAN, RG137,120V	2
57	BD710115602V	GASKET, VENTURI/FAN/AIR DUCT	1
51	BD000003402101	ORING, 70X3	1
64	BD71011301V	GASKET G 3/4 17X24X2	1
50	BD711408002V	GASKET BURNER	1
NS	240011699	KIT INSTRUCTIONS	1

<b>KIT 550003248 - PUMP REPLACEMENT KIT INCLUDES:</b>			
<b>POS</b>	<b>PN</b>	<b>DESCRIPTION</b>	<b>QTY</b>
15	BD722354801V	PUMP 115V 60HZ	1
73	BD0000540214	GASKET G1 1/2,44X30X2MM	2
NS	240011702	KIT INSTRUCTIONS	1

## KITS - GAS VALVE & COMPONENTS

<b>KIT 550003244 - GAS VALVE REPLACEMENT KIT INCLUDES:</b>			
<b>POS</b>	<b>PN</b>	<b>DESCRIPTION</b>	<b>QTY</b>
64	BD710113001V	GASKET G3/4 17X24X2	2
24	BD721613001V	SIT GAS VALVE 848	1
61	BD710390601V	GASKET GAS VALVE	1
NS	BD00000810172	SCREW M4X 10	2
NS	BD00000831941	WASHER 5.3X10 C70	2
NS	BD00000831941	GASKET G1 22X30,3X2 WRC	2
NS	240011698	KIT INSTRUCTIONS	1

<b>KIT 550003261 - GAS PIPE REPLACEMENT KIT INCLUDES:</b>			
<b>POS</b>	<b>PN</b>	<b>DESCRIPTION</b>	<b>QTY</b>
23	BD711178602V	PIPE GAS	1
64	BD710113001V	SEALING WASHER G 3/4 17X24X2	2
NS	240011723	INSTRUCTIONS - 240011723	1

NS = NOT SHOWN

## KITS - AIR & GAS COMPONENTS

<b>KIT 550003265 - VENTURI REPLACEMENT KIT INCLUDES:</b>			
<b>POS</b>	<b>PN</b>	<b>DESCRIPTION</b>	<b>QTY</b>
52	BD710402202V	MXR,BICLAP, 30, VENTURI	1
51	BD000003402101	O-RING 70X3	1
64	BD71011301V	GASKET G 3/4 17X24X2	1
NS	240011724	INSTRUCTIONS	1

<b>KIT 550003258 - AIR GAS COLLECTOR REPLACEMENT KIT INCLUDES:</b>			
<b>POS</b>	<b>PN</b>	<b>DESCRIPTION</b>	<b>QTY</b>
87	BD711187501V	AIR GAS MANIFOLD	1
57	BD710115602V	GASKET,VENTURI/FAN/AIR DUCT	1
64	BD710113001V	GASKET G 3/4 17X24X2	2
91	BD710114502V	GASKET, BURNER SPCR EXTN	1
NS	240011725	INSTRUCTIONS	1

<b>KIT 550003259 - AIR GAS COLLECTOR EXTENSION REPLACEMENT KIT INCLUDES:</b>			
<b>POS</b>	<b>PN</b>	<b>DESCRIPTION</b>	<b>QTY</b>
92	BD000005212922	SPCR/EXTN	1
50	BD721543101V	ASSY, GASKET	2
64	BD710113001V	GASKET G3/4 17X24X2	1
91	BD710114502V	GASKET, BRN SPCR/EXT	1
NS	240011726	INSTRUCTIONS	1

<b>KIT 550003264 - FLUE CONNECTION REPLACEMENT KIT INCLUDES:</b>			
<b>POS</b>	<b>PN</b>	<b>DESCRIPTION</b>	<b>QTY</b>
6	BD000005670522	ASSY, FLUE ADPTR	1
45	BD000005410712	SEAL, FLUE, ADPTR	1
NS	240011727	INSTRUCTIONS	1

NS = NOT SHOWN

## KITS - PIPING

<b>KIT 550003254 - SUPPLY PIPING REPLACEMENT KIT INCLUDES:</b>			
<b>POS</b>	<b>PN</b>	<b>DESCRIPTION</b>	<b>QTY</b>
22	BD711178701V	FLOW PIPE	1
21	BD710626001V	OVER TEMP, THERMOSTAT	1
40	BD722601801V	NTC WATER	1
59	BD000005411331	O-RING, 20,24X2,62	1
58	BD721623501V	FIXING CLIP - HEX PIPES	1
62	BD000005405001	GASKET G1 22X30, 3X2 WRC	1

<b>KIT 550003255 - RETURN PIPING REPLACEMENT KIT INCLUDES:</b>			
<b>POS</b>	<b>PN</b>	<b>DESCRIPTION</b>	<b>QTY</b>
14	BD722270001V	RETURN PIPE 1.70	1
59	BD000005411331	O-RING 20,24X2,62	1
16	BD000005652731	AIR VENT VLV G3/8	1
58	BD721623501V	FIXING CLIP - HEX PIPES	1
40	BD722601801V	NTC WATER	1
60	BD000005402141	PUMP GASKET G1 1/2, 44X30X2MM	1

<b>KIT 550003260 - SUPPLY CONNECTION FITTING REPLACEMENT KIT INCLUDES:</b>			
<b>POS</b>	<b>PN</b>	<b>DESCRIPTION</b>	<b>QTY</b>
18	BD711237001V	NPL G1 ", X 1" NPT	1
66	BD710397801V	GSKT, G1", 31X42, FOAM	1
NS	BD710189501V	SCREW M5C10TEI+CR-8.8, HXHEAD	2
NS	BD000008319417	WASHERS, 3X10 C70	2
62	BD000005405001	GASKET, GI 22X30.3X2	1

<b>KIT 550003252 - HYDROBLOCK ASSEMBLY REPLACEMENT KIT INCLUDES:</b>			
<b>POS</b>	<b>PN</b>	<b>DESCRIPTION</b>	<b>QTY</b>
17	BD711238101V	HYDROBLOC	1
19	BD710188101V	DRAINING TAP	1
66	BD710397801V	GASKET G1", 31X42, FOAM	1
60	BD000005402141	PUMP GASKET G1 1/2, 44X30X2MM	1
NS	240011703	KIT INSTRUCTIONS	1

NS = NOT SHOWN



## KITS - CONDENSATE COMPONENTS

<b>KIT 550003247 - CONDENSATE TRAP REPLACEMENT KIT INCLUDES:</b>			
<b>POS</b>	<b>PN</b>	<b>DESCRIPTION</b>	<b>QTY</b>
37	BD765674901V	SIPHON, H220	1
65	BD721696402V	GASKET SIPHON	1
NS	240011701	KIT INSTRUCTIONS 240011701	1

<b>KIT 550003262 - CONDENSATE PIPE REPLACEMENT KIT INCLUDES:</b>			
<b>POS</b>	<b>PN</b>	<b>DESCRIPTION</b>	<b>QTY</b>
38	BD721622201V	HOSE, HTEX, SIPHON	1
39	BD721632601V	HOSE CONDS DRN, SIPHON	1

<b>KIT 550003263 - CONDENSATE TRAY REPLACEMENT KIT INCLUDES:</b>			
<b>POS</b>	<b>PN</b>	<b>DESCRIPTION</b>	<b>QTY</b>
11	BD767553501V	CONDENSATE TRAY	1
46	BD767373901V	SEAL, COND TRAY	1

NS = NOT SHOWN

## KITS - CONTROL BOARDS

<b>KIT 550003266 - PCB SCU-S02 REPLACEMENT KIT INCLUDES:</b>			
<b>POS</b>	<b>PN</b>	<b>DESCRIPTION</b>	<b>QTY</b>
31	BD764989601V	PCB SCU-S02	1
NS	240011707	INSTRUCTIONS	1

<b>KIT 550003267 - PCB INTERFACE REPLACEMENT KIT INCLUDES:</b>			
<b>POS</b>	<b>PN</b>	<b>DESCRIPTION</b>	<b>QTY</b>
32	BD764997601V	HONEYWELL OTZTC PCB	1
NS	240011708	INSTRUCTIONS	1

<b>KIT 550003268 - PCB PCU-04 REPLACEMENT KIT INCLUDES:</b>			
<b>POS</b>	<b>PN</b>	<b>DESCRIPTION</b>	<b>QTY</b>
26	BD764710901V	PCB PCU-04	1
NS	240011709	INSTRUCTIONS	1

<b>KIT 550003269 - SAFETY PCB REPLACEMENT KIT INCLUDES:</b>			
<b>POS</b>	<b>PN</b>	<b>DESCRIPTION</b>	<b>QTY</b>
28	BD760299003V	CONTROLLER SAFETY SU-01	1
NS	240011710	INSTRUCTIONS	1

<b>KIT 550003272 - CONFIGURATION KEY KIT INCLUDES:</b>			
<b>POS</b>	<b>PN</b>	<b>DESCRIPTION</b>	<b>QTY</b>
NS	BD764979601V	PARAMETER STICK	1
NS	240011712	INSTRUCTIONS	1

NS = NOT SHOWN

## KITS - SENSOR

<b>KIT 550003253 - PRESSURE SENSOR REPLACEMENT KIT INCLUDES:</b>			
<b>POS</b>	<b>PN</b>	<b>DESCRIPTION</b>	<b>QTY</b>
35	BD710109101V	PRESSURE SENSOR	1
93	BD710654101V	CLIP, PRESSURE SENSOR	1
NS	240011704	INSTRUCTIONS	1

## WIRING - REPLACEMENT

<b>PN</b>	<b>DESCRIPTION</b>
721796800	FAN WIRING
721804700	IGNITOR WIRING
721807000	GAS VALVE WIRING
721807500	POWER SUPPLY PUMP WIRING
721838500	SAFETY TH/FAN WIRING
721814100	SENSORS WIRING
722266400	CONTROL BOX/PCB SCU CONNECTING
722267400	SECONDARY ELECTRIC BOX POWER WI
722410200	POWER SUPPLY PUMP UP26-96F WIRIN
722577700	PCB POWER WIRING SECONDARY BOX
722577800	POWER SUPPLY WIRING
765517700	PCB/SWITCH WIRING

## CONVERSION KIT

<b>KIT 550003316 - CONVERSION KIT NG TO LP KIT INCLUDES:</b>			
<b>POS</b>	<b>PN</b>	<b>DESCRIPTION</b>	<b>QTY</b>
NS	BD71071880V	POLIDORO VENTURI FOR LP	1
NS	240011680	LABEL, CONVERSION,GPL	1
NS	240008688	LBEL, CSA, CONVERTED BY	1
NS	240004760	LABEL RP 4"X9-1/2" UL969	2
NS	240011739	INSTRUCTIONS	1

NS = NOT SHOWN

## KITS -CONTROL & JACKET PANELS

<b>KIT 550003270 - PCB DISPLAY REPLACEMENT KIT INCLUDES:</b>	
<b>DESCRIPTION</b>	<b>QTY</b>
PCB DISPLAY	1
INSTRUCTIONS - 240011711	1

<b>PANEL ASSEMBLIES</b>			
<b>KIT #</b>	<b>DESCRIPTION</b>	<b>DESCRIPTION</b>	<b>QTY</b>
550003271	CONTROL ASSEMBLY	CONTROL COVER	1
		CONTROL	1
550003273	LEFT PANEL ASSEMBLY INCLUDES:	LEFT PANEL	1
		PANEL SEAL	2
550003274	RIGHT PANEL ASSEMBLY INCLUDES:	RIGHT PANEL	1
		PANEL SEAL	2
550003275	FRONT PANEL ASSEMBLY INCLUDES: BEZEL, INSULATION AND LOGO	FRONT PANEL	1



2201 DWYER AVENUE, UTICA, NY 13501  
 2201 DWYER AVENUE, UTICA, NY 13501  
 TEL. 800 253 7900  
[WWW.ECRINTERNATIONAL.COM](http://WWW.ECRINTERNATIONAL.COM)  
[WWW.ECRINTERNATIONAL.COM](http://WWW.ECRINTERNATIONAL.COM)

ALL SPECIFICATIONS SUBJECT TO CHANGE WITHOUT NOTICE.  
 ALL SPECIFICATIONS SUBJECT TO CHANGE WITHOUT NOTICE.  
 ©2018 ECR INTERNATIONAL, INC.  
 ©2018 ECR INTERNATIONAL, INC.